



SEYCHELLES-TSUNAMI REPORT

BY: DOREEN L.IKULA

FORECASTING OFFICER

SEYCHELLES METEOROLOGICAL AUTHORITY

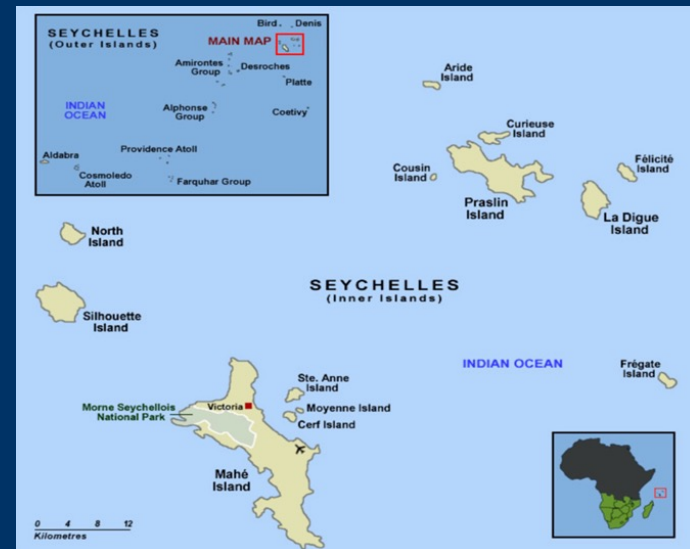
THE REPUBLIC OF SEYCHELLES

- An archipelago made up of 115 islands.
- Located in the Western Indian Ocean between 4 and 9 degrees south of the equator.
- The total land area is 455.3 square kilometers
- The archipelago is divided into two distinct groups of islands: the granitic group, 43 islands in all, with mountainous peaks and narrow coastal lands, and the low-lying islands, all coralline numbering 72.



THE REPUBLIC OF SEYCHELLES

- The main island is Mahé with a land area of 148 square kilometers
- The two other islands of major importance as regards to size and population are Praslin and La Digue, 33.6 km and 48 km from Mahe, respectively.
- Total Population was 102, 612 according to the 2022 Census (121, 355 mid-2024 estimates)
- Has 26 electoral districts



THE REPUBLIC OF SEYCHELLES

- As a small island developing state (Sids), Seychelles is especially vulnerable to ocean-related hazards {Tsunami, Tropical cyclone, Sea level rise, Storm Surges etc.}

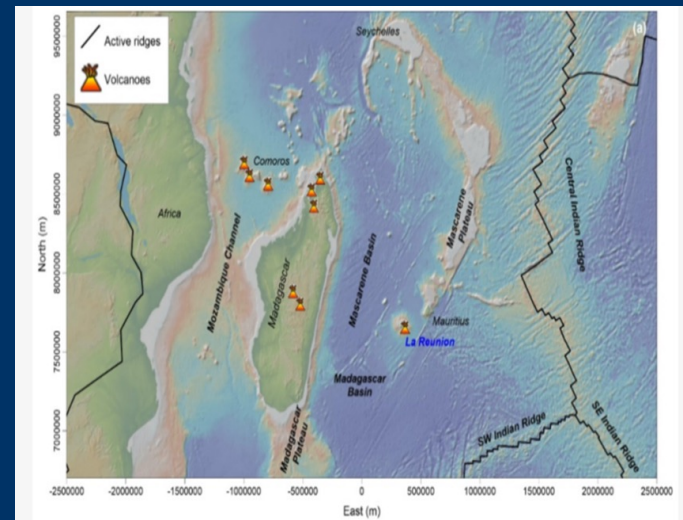
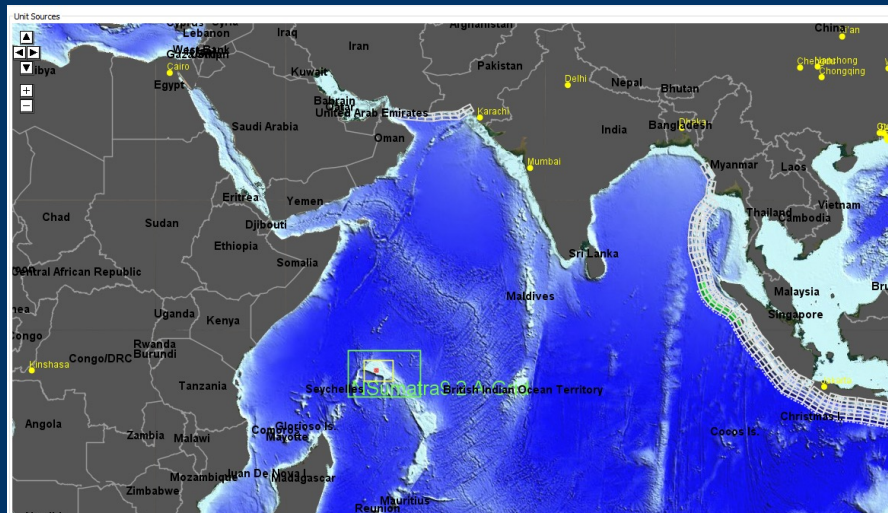


POTENTIAL TSUNAMI SOURCES

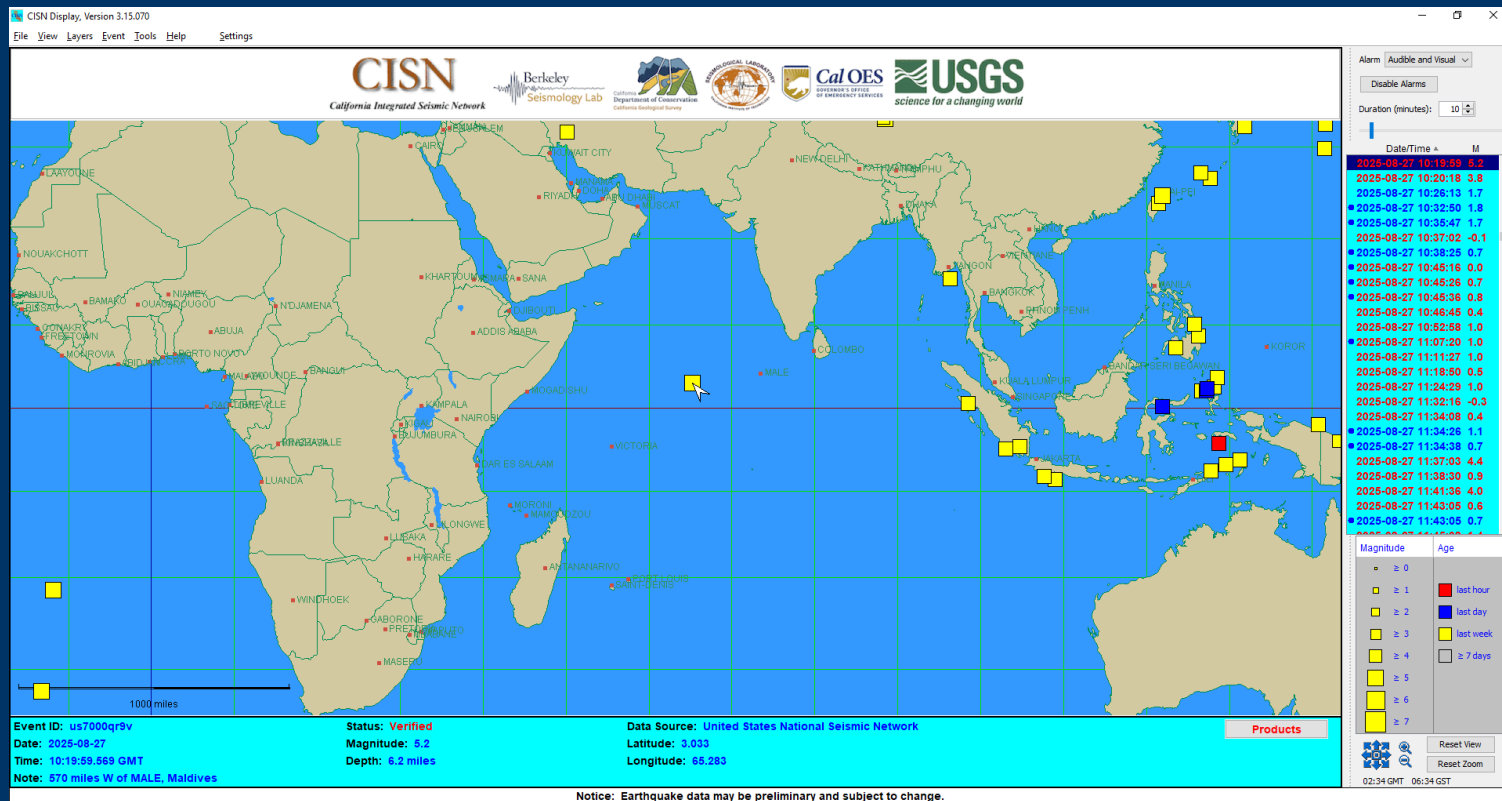
SUBDUCTION ZONE:
MAKRAN, ANDAMAN, NICOBAR ISLANDS
AND SUMATRA

TSUNAMIGENIC VOLCANOES:

- FANI MAORE FRANCE COMORES {TYPE C} ,LAST ERUPTION 2022
- PITON DE LA FOURNAISE FRANCE REUNION ISLAND {TYPE D} ,LAST ERUPTION 2021



MONITORING



TSUNAMI SERVICE PROVIDER [TSP] -INDIA,AUSTRALIA AND INDONESIA.

WEIO20 DEMS 130249

TSUNAMI BULLETIN NOTIFICATION MESSAGE NUMBER 1
IOTWMS TSUNAMI SERVICE PROVIDER INDIA (ITEWC)
ISSUED AT 0249 UTC SATURDAY 13 SEPTEMBER 2025

TO: INDIAN OCEAN NATIONAL TSUNAMI WARNING CENTRES (NTWC)
FROM: IOTWMS-TSP INDIA

NOTIFICATION:
IOTWMS-TSP INDIA HAS JUST ISSUED TSUNAMI BULLETIN NUMBER 1
FOR THE INDIAN OCEAN, BASED ON THE FOLLOWING EARTHQUAKE EVENT:

Magnitude : 7.0 M
Depth : 10.0 km
Date : 13 Sep 2025
Origin Time : 0237 UTC
Latitude : 52.93 N
Longitude : 161.07 E
Location : Off East Coast of Kamchatka

TO VIEW THE BULLETIN GO TO THE IOTWMS-TSP INDIA WEBSITE AT:
[https://tsunami.incois.gov.in/TEWS/displaybulletinslatest.jsp?](https://tsunami.incois.gov.in/TEWS/displaybulletinslatest.jsp?type=TSP&eventId=incois2025rycm&aos=exchange&currBullNo=1&latestBullNo=1)
[type=TSP&eventId=incois2025rycm&aos=exchange&currBullNo=1&latestBullNo=1](https://tsunami.incois.gov.in/TEWS/displaybulletinslatest.jsp?type=TSP&eventId=incois2025rycm&aos=exchange&currBullNo=1&latestBullNo=1)

OFFICIAL

WEIO24 AMMC 130247

TSUNAMI BULLETIN NOTIFICATION MESSAGE NUMBER 1
IOTWMS TSUNAMI SERVICE PROVIDER AUSTRALIA [JATWC]
ISSUED AT 0247 UTC SATURDAY 13 SEPTEMBER 2025

TO: INDIAN OCEAN NATIONAL TSUNAMI WARNING CENTRES [NTWC]
FROM: IOTWMS-TSP AUSTRALIA

NOTIFICATION:
IOTWMS-TSP AUSTRALIA HAS JUST ISSUED TSUNAMI BULLETIN NUMBER 1 FOR
THE INDIAN OCEAN, BASED ON AN EARTHQUAKE WITH THE FOLLOWING DETAILS:

MAGNITUDE: 7.2 Mw[Mwp]
DEPTH: 51 km
DATE: 13 Sep 2025
ORIGIN TIME: 0237 UTC
LATITUDE: 53.04N
LONGITUDE: 160.26E
LOCATION: Near East Coast of Kamchatka

TO VIEW THE BULLETIN GO TO THE IOTWMS-TSP AUSTRALIA WEBSITE AT:

<http://reg.bom.gov.au/tsunami/rtsp>

TSP-InaTEWS-20250913-0247-001

TSUNAMI BULLETIN NOTIFICATION MESSAGE NUMBER 1
IOTWMS TSUNAMI SERVICE PROVIDER INDONESIA (InaTEWS-BMKG)
issued at 0247 UTC, Sep 13, 2025

TO: INDIAN OCEAN NATIONAL TSUNAMI WARNING CENTRES (NTWC)
FROM: IOTWMS-TSP INDONESIA

NOTIFICATION:
IOTWMS-TSP INDONESIA HAS JUST ISSUED TSUNAMI BULLETIN NUMBER 1 FOR
THE INDIAN OCEAN, BASED ON THE FOLLOWING EARTHQUAKE EVENT:

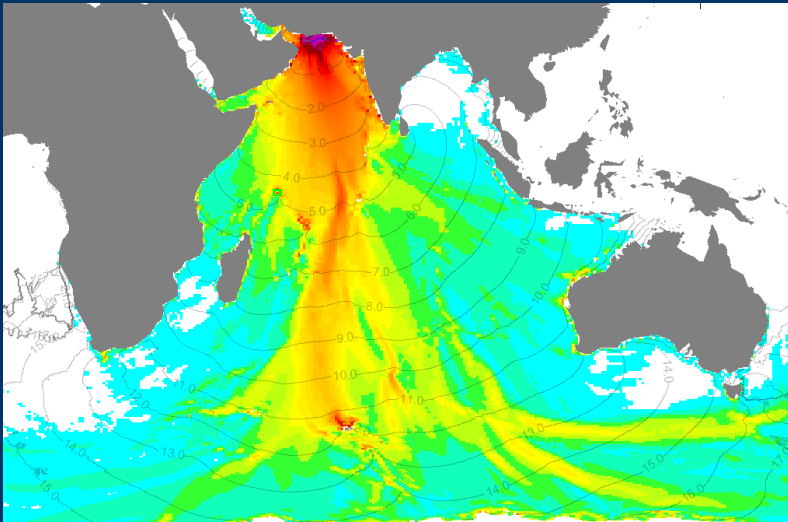
Magnitude : 7.0 Mwp
Depth : 10km
Date : 13 Sep 2025
Origin Time: 02:37:52 UTC
Latitude : 53.14N
Longitude : 160.20E
Location : Near East Coast of Kamchatka

TO VIEW THE BULLETIN GO TO THE IOTWMS-TSP INDONESIA WEBSITE AT:

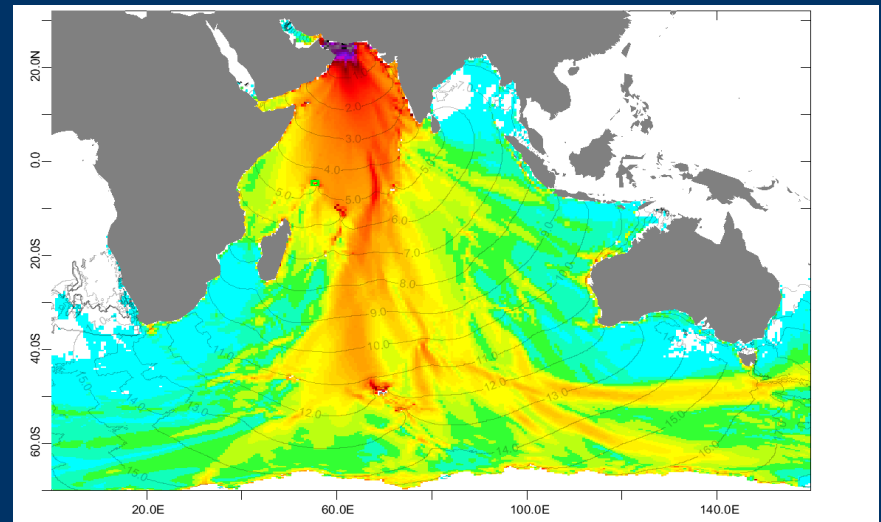
<http://rtsp.bmkg.go.id>

MODELLING: ComMIT

Off Coast of Pakistan-9.0 Mw

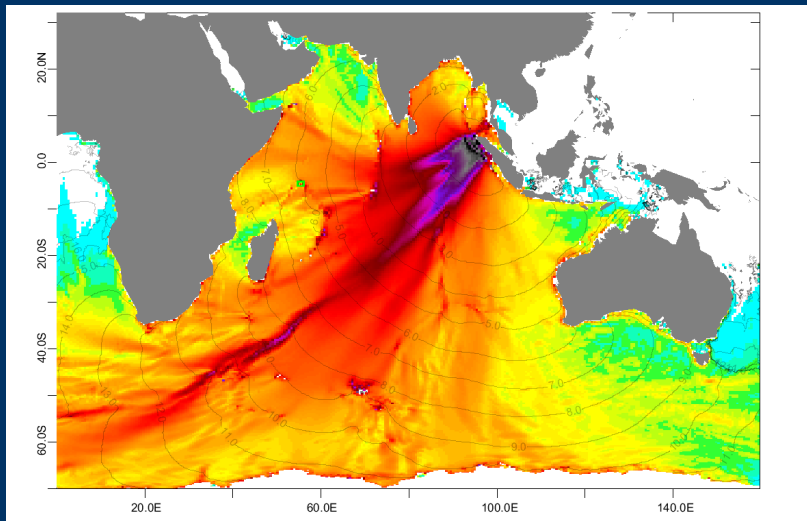


Off Coast of Iran-9.2Mw

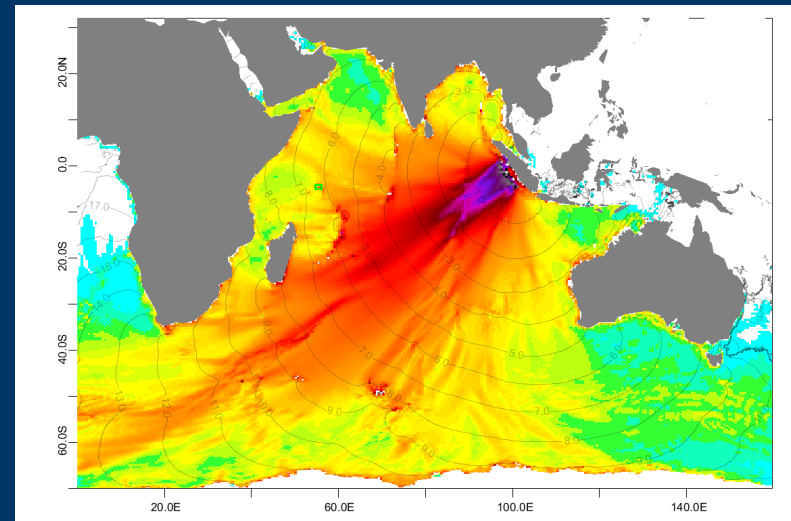


MODELLING: ComMIT

Banda Aceh, North Sumatra-9.3Mw

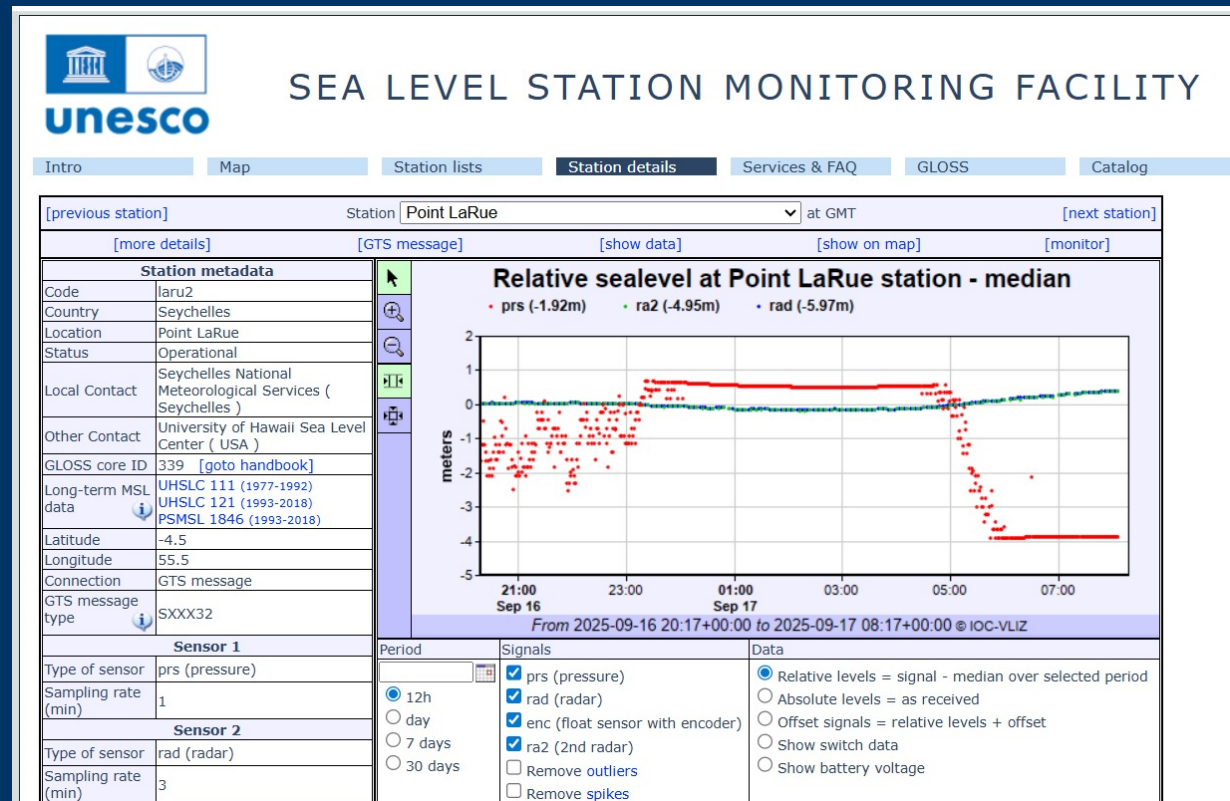


South of Sumatra-9.2Mw

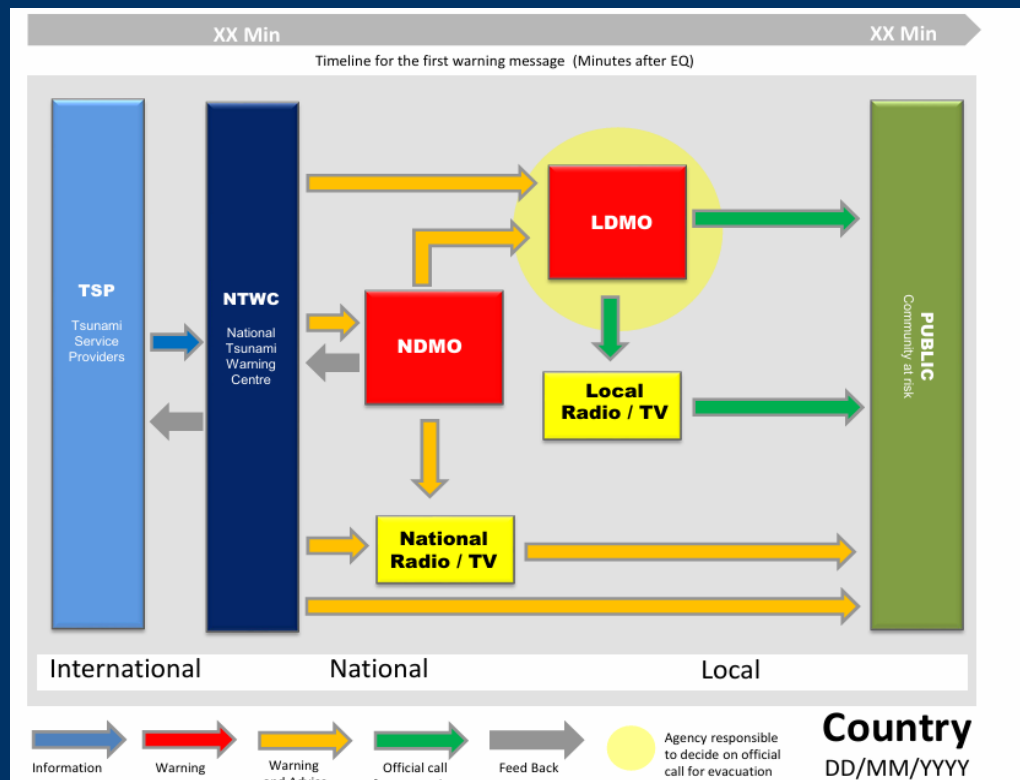


SEA LEVEL MONITORING

- TIDE GAUGE
- WAVE BOUY



TSUNAMI WARNING CHAIN TEMPLATE



TSUNAMI IN SEYCHELLES

Only 2 officially identified tsunami observed in Seychelles:

1. Tsunami caused by the 27th August 1883 Krakatoa eruption in Java (No damages caused)
2. Tsunami caused by the 26th December 2004 earthquake in Sumatra (2 deaths were recorded & Total estimates of damage have been assessed at US\$30 million (UNEP, 2005) due to both structural damage and loss of earnings following the event)



SEYCHELLES AND TSUNAMI READY PROGRAMME

Seychelles National Tsunami Ready Board Launch.

- On 3rd July 2025, the National Tsunami Ready Board was launched.
- The ceremony featured the official presentation of appointment letters by the Minister of Internal Affairs, Charles Fonseka, to the newly nominated board members.
- Members of the newly appointed Seychelles National Tsunami Ready Board are: Robert Ernesta, Director General, Disaster Risk Management Division (DRMD); Vincent Amelié, chief executive, Seychelles Meteorological Authority (SMA); Cyril Bonnelame, chief executive, Islands Development Company (IDC); Major Gerald Wong-Pool, Director, National Information Sharing and Coordination Centre (NISCC); and Peter Estico, Head of Emergency Section, Ministry of Local Government and Community Affairs.



Members of the National Tsunami Ready Board in a souvenir photograph with Minister Fonseka. Absent is Vincent Amelié who was represented by Doreen Ikula

Seychelles launches National Tsunami Ready Board to strengthen coastal resilience



SEYCHELLES AND TSUNAMI READY PROGRAMME

The Seychelles National Tsunami Ready Board will serve as the principal national oversight body for the implementation of the UNESCO Intergovernmental Oceanographic Commission (IOC)'s Tsunami Ready Recognition programme.

The programme is a performance-based initiative that enhances community-level preparedness through clear indicators, collaborative planning, and capacity building.

NB: The board will be assisted by a steering committee.



SEYCHELLES AND TSUNAMI READY PROGRAMME

Key responsibilities of the board include:

- Providing strategic direction and national coordination on tsunami preparedness initiatives;
- Supporting the long-term implementation of the Tsunami Ready programme across Seychelles' coastal communities;
- Reviewing and endorsing local applications for Tsunami Ready recognition prior to international submission;
- Promoting sustainable risk reduction practices and institutional collaboration.
- Seychelles' commitment to the IOC Tsunami Ready programme is guided by UNESCO-IOC Manual 74: Tsunami Ready Community Recognition and supported through the Indian Ocean Tsunami Warning and Mitigation System (IOTWMS).

TSUNAMI READY PROGRAMME

PILOT- ANSE ROYAL DISTRICT

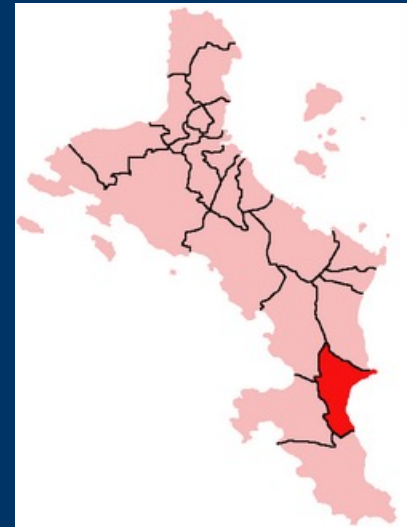
Location:

South East coast of Mahé Island approximately 25km from the Capital Victoria.

Total Population= 4,552 (2022 Census)
(5,108 mid-2024 estimates)

Estimated Tourist Population

27 accommodations with 237 rooms in total =
approximately 474 at full occupancy



THE INFRASTRUCTURES ON THE COAST OF ANSE ROYALE



THE INFRASTRUCTURES ON THE COAST OF ANSE ROYALE





OTHER ACTIVITIES.

- Seychelles participates and will continue to actively participate in IOWAVE exercises . As of this year IOWAVE25 we are intending to participate in two scenarios ;
Scenario 3 starting at 15:00 UTC (eruption at 14:00 UTC) on Saturday 25 October 2025: Tsunami generated by volcanic eruption at Fani Maore and **Scenario 4** starting at 03:00 UTC on Wednesday 5 November 2025: Magnitude 9.2 earthquake in Northern Sumatra, Indonesia.
- Tsunami song competition {on going}.



MAHALO!!!!